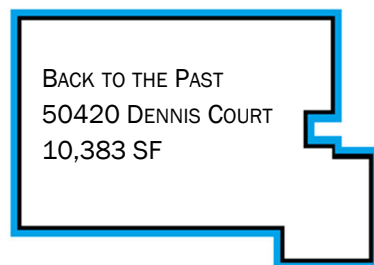
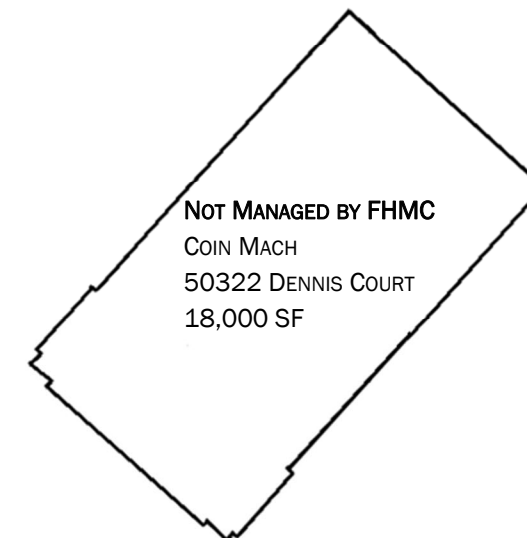
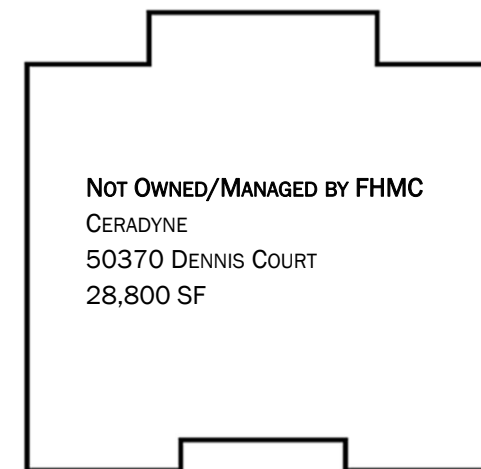
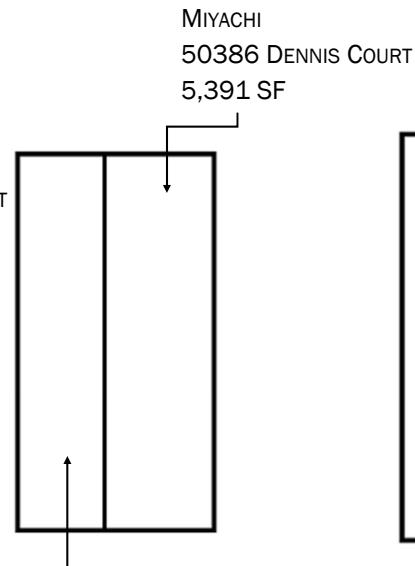
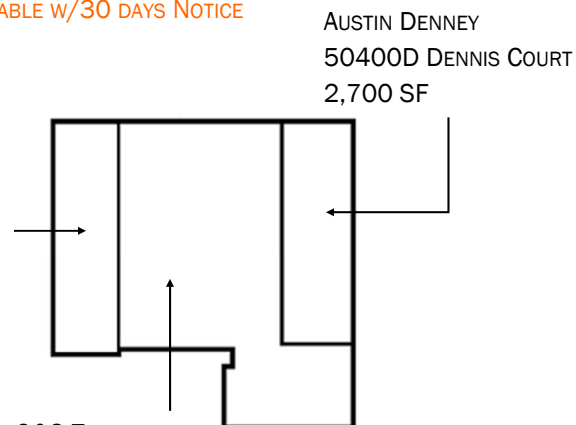


AFC-HOLCROFT, LLC
50400A DENNIS COURT
2,175 SF



AVAILABLE
50204 DENNIS COURT
2,175 SF

AVAILABLE
50206 DENNIS COURT
2,175 SF

MASON GAGE & TOOL, INC.
50210 DENNIS COURT
2,990 SF

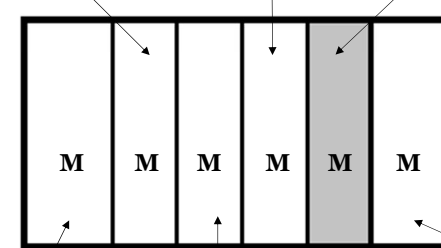
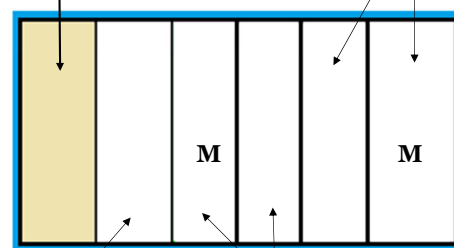
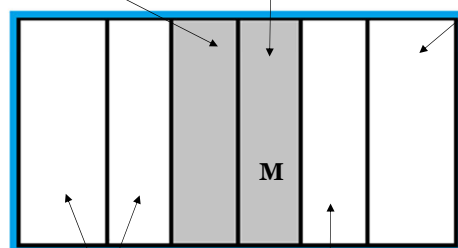
SUPERIOR MEASUREMENT
50220 DENNIS COURT
2,990 SF
AVAILABLE W/30 DAYS NOTICE

STERLING EDGE
50228-30 DENNIS COURT
2,175 & 2,990 SF

RADIO SYSTEMS CORP
50242 DENNIS COURT
2,175 SF

DAN'S CUSTOM INTERIORS
50246 DENNIS COURT
2,175 SF

AVAILABLE
50248 DENNIS COURT
2,175 SF



FUNCTIONAL STRENGTH
50200 & 50202 DENNIS COURT
2,990 SF & 2,175 SF

CEC CONTROLS
50208 DENNIS COURT
2,175 SF

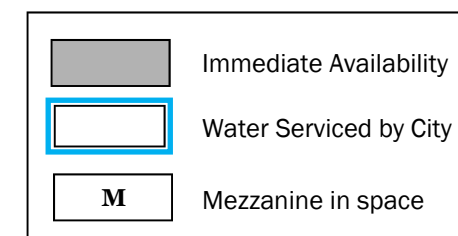
ICON MATERIAL HANDLING
50222 DENNIS COURT
2,175 SF

MLC DESIGNS, INC.,
50224 & 50226 DENNIS COURT
2,175 SF & 2,175 SF

ADVANTAGE CONSULTING
50240 DENNIS COURT
2,990 SF

MORE FIT
50244 DENNIS COURT
2,175 SF

QUALITY KITCHEN
50250 DENNIS COURT
2,990 SF



FIRST HOLDING MANAGEMENT COMPANY LLC
6960 ORCHARD LAKE ROAD, SUITE 300
WEST BLOOMFIELD, MICHIGAN 48322
TEL: 248.855.3330 FAX: 248.855.6355

DENNIS INDUSTRIAL
50200-50420 DENNIS COURT
WIXOM, MICHIGAN